

"It's amazing how I can now look at my students with such detail. The VDC staff has been a wonderful support through this entire process!"

– Brucie Donahue, Educational Technologist
Northfield School District

VDC Differentiated Memberships

Level 1: Includes 5 user accounts for any user designated by the Superintendent. Access can be tailored to meet the needs of the individual user. Additional user accounts beyond the 5 can be purchased to supplement the Level 1 membership.

Level 2 and 3: Includes all the benefits of the Level 1 membership PLUS

- ✓ a Local Data Warehouse built/maintained for your SU/SD
- ✓ up to 8 days of data services by a VDC staff member (5 for Level 2)
- ✓ Custom report development (Level 3)

2011/2012 Fees

Level 1	\$1,750
Level 2	\$3,000
Level 3	\$5,000
Additional user accounts: \$200 per user	
Additional trainings: \$100 per user	
Additional Consulting or Data Services: \$500/day	

VDC Staff

John Ferrara, Data Coordinator

VDC Board of Directors

Bob Owens, ANWSU (Co-chair)
Brucie Donahue, WSSU (Co-chair)
Bill Kimball, WSSU (Sec/Treas)
Nancy Cornell, ANESU
Carole Freeman, WCSU
Dan French, BRSU
Chris Kibbe, WNESU
Dean Pallozzi, LSSU
Susan Sheets, ACSU

VT Department of Education

Denise Sanders, DOE Project Manager

250 Main Street, Suite 202; Montpelier, VT 05602
802-224-9110; info@vdcmembers.org
www.vermontdata.org

Vermont Data Consortium



"The data warehouse has allowed me to have quick access to data that would have taken hours to calculate before. With it we are providing more data and in a more timely way than ever before."

– Bob McNamara, Former Supt
Washington West Supervisory Union

Vermont Data Consortium (VDC) is a statewide collaborative, founded by its members, to deliver an education data warehouse, data analysis tools, and training for evidence-based school improvement. The goal of VDC is to ensure that Vermont supervisory unions/districts have cost-effective, timely and accurate student and educational data available to address continuous school improvement as well as state and federal accountability and reporting requirements. To accomplish this goal VDC partnered with the **Vermont Department of Education (VTDOE)** and **TetraData Corporation**.

What's New?

Student Roster and Individual Assessment Profile Reports....In 2009 the VDC began producing four different student reports based on data in the EDW that are distributed to EDW users two times per year.

Local warehouses.... I / SU/SDs plan to work with VDC staff in FY12 to build, maintain or expand an existing local data warehouse on EDW.

Dynamic reports....The Vermont Department of Education is using EDW to develop new reports for school administrators, similar to the "graphing tool" of years past.



www.vermontdata.org

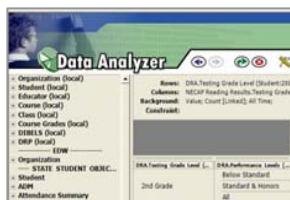
Education Data Warehouse (EDW) is the "database" which includes organization, school and student data including student census (enrollment, demographic), state assessments, school finances, teacher licensure and more.

Users can.....log on via the web to a secure server maintained by VDC and VTDOE staff...



... access student and school data as well as public information about other Vermont schools...

LAOUE, F. M.
UNGERER, R. K.
WERTMAN, C. A.
WILEY, R. M.
BIBONA, E. F.
BRINZO, L. K.
AJAMIE, B. G.

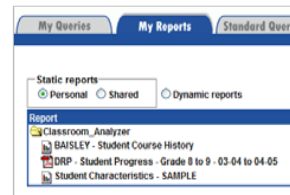


... "drill down" through the data to see student lists...

Administrative ID Scrambled Student, Oct 1, Grade Level:
2001-2002, 2002-2003, 2003-2004, 2004-2005, 2005-2006
Select (Link) Results:

	Year					
	2000-2001	2001-2002	2002-2003	2003-2004	2004-2005	2005-2006
7th Grade	185	166	184	171	154	141
8th Grade	176	165	173	184	177	141
9th Grade - H.S. Prep.	197	180	176	177	161	141
10th Grade - H.S. Sep.	180	205	175	179	181	141
11th Grade - H.S. Jun.	159	172	202	168	175	141

.... and view reports in a main 'portal' to be accessed at any time by your users.



Local Data Warehouse is an additional tool which allows users to cross-query state data with local assessments, local student or program indicators and individual teacher class lists.

Course (local).Course Nam...	NSRE Math Performance Levels.Performance Levels (Stu	
	Below Standard	Met Standard
Algebra II		100.00 %
Geometry		100.00 %
Algebra 1	11.86 %	88.14 %
Pre-Algebra	41.82 %	58.18 %
Foundations for Pre-A...	90.00 %	10.00 %
Consumer Math	100.00 %	

Districts can import local data including POA, Gates McGinnitie, DRP, Dibels, Sat-9, Sat-10, Terra Nova, portfolios scores, custom-developed local assessments, Standard or GE-based indicators, class/course lists, grades, attendance, discipline and program indicators (ex: Reading Recovery, Reading First, extracurricular participation, etc.)

"We needed to examine our math NECAP scores to determine what classes/scheduling was best for different groups of students. The EDW local warehouse has allowed us to look at student learning, school processes and demographic data together as multiple measures. Through the inclusion of our student information system data and local assessments we can examine programs and processes to determine the strengths and weaknesses of course schedules and offerings, content area programs, and professional development."

– Jan Willey, Associate Superintendent Addison Central SU & Patricia Aigner, Technology Director Rutland City SD